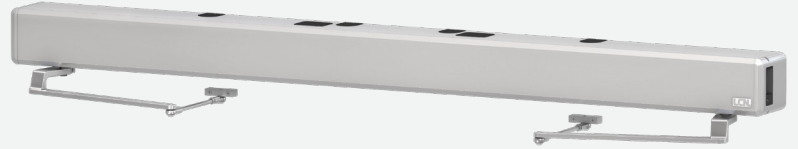


9560IQ Series

Electromechanical Automatic Operators



Overview

The LCN® 9560IQ Senior Swing is a heavy-duty electromechanical swing door operator. Designed for a surface mount on double door applications, this configuration is ideal for independent double door operation and features two motor gearboxes and two separate controllers. The 9560IQ can be mounted with either two regular arms (push), two standard arms (pull), or one of each (double egress), allowing flexibility for a variety of opening needs.

When activated, this operator provides a smooth and seamless opening experience to accommodate those with accessibility needs or a pedestrian with their hands full. Each of the double doors controlled by the 9560IQ can also be operated manually and independently for regular pedestrian traffic and include both Power Assist and Push n' Go, which can be activated for an easy, smooth manual open.

AdaptivIQ™

This built-in technology allows our operator to automatically adjust to external pressures and resistance during both opening and closing cycles. Through a combination of dynamic braking, responsive motor control, and Smart Power Boost technology, our operator compensates for wind, carpet drag, and HVAC stack pressure, allowing the door to latch securely and minimize the risk of slamming.

Fully-Loaded Controller

With 23 total programmable settings all accessible through a user-friendly LCD screen, a self-calibration cycle that establishes default settings based on the physical aspects of the door and the opening area, and real-time error code and diagnostic information, this loaded control box provides users with complete control of our automatic operator.

Single-Person Mechanical Installation

Our motor gearbox and controller are each mounted to a specially designed hook-and-cleat, allowing them to simply hook onto the backplate to provide a hands-free holding option while each component is secured. Not only is this a simplified install, but it is also a much safer install and can reduce mistakes for less familiar installers.

Sleek Industrial Design

Designed to blend in as part of any environment, the rounded corners, sleek edges, and multiple finish options allow architects and end users alike to better curate their aesthetic vision without being interrupted by the necessary hardware.

Features & Benefits

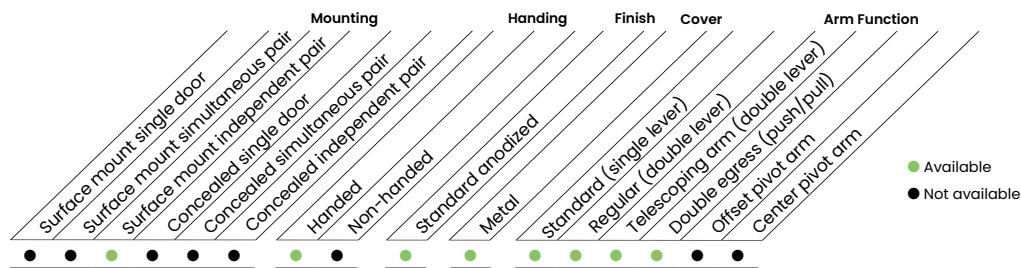
- Capability to operate and control doors of up to 600 pounds
- Power Assist and Push and Go to allow for easy manual operation
- Auto Reverse on Closing to minimize potential damage from obstructions
- Opening Speed and Force programmed separately for further customization
- Off/Auto/Hold-Open switch hidden outside the cover to easy yet discreet access
- On-board power supply (24VDC Output) to power actuators, card readers, and safety circuits
- Built-in support for up to six optional safety sensors

Features

Certifications	Grade 1 – ANSI A156.19, UL325, UL228, UL10C, ADA, 100 Hour Salt Spray, CSFM, Meets BAA – Buy American Act
Handing	Handed
Warranty	2 years
Cover	Metal cover (MC)
Door width	Minimum combined door width: 65" – 98" Simultaneous pair – width per leaf 30" – 48"
Door weight	Up to 600lbs

Fasteners	Machine screws (MS)
Mounting	Independent pair, surface, pull, push, double egress
Arms	Standard arms (pull) Regular arms (push) Long arms (push) Telescoping arms (push) Telescoping long arms (push) Regular + standard arm (double egress) Telescoping + standard arm (double egress)
Finishes/colors/ powder coat	<ul style="list-style-type: none"> 628 – Aluminum, anodized 710 – Dark bronze, anodized 711 – Matte black, adonized
Power input	115VAC single phase @60Hz, 230VAC single phase @50Hz
Power output	2A @ 24VDC

Product Configurations



Note: Special Templates – Customized installation templates or products may be available to solve non-standard applications. Contact LCN Product Support for assistance.

User-Adjustable Features

- Opening Speed
- Opening Force
- Hold Open Delay
- Backcheck Speed
- Backcheck Angle
- Closing Speed of Door 1
- Closing Speed of Door 2
- Latch Angle
- Smart Power Boost
- Smart Power Boost Angle
- Smart Power Boost Force
- Power Assist
- Power Assist Force
- Push & Go
- Alternate Action
- Auto Reverse on Closing
- Electric Lock Delay
- Preload Release
- DMSS Safety Action
- DMSS Safety Side Ignore Angle
- Actuator 2 Enable
- Audible Beep

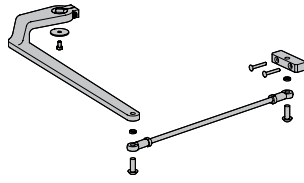
Accessories

Arms



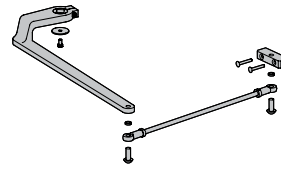
9560IQ-3077T
Standard Arm
(STDTRKARM)

- A non-handed, single lever arm that directly connects the cylinder and track/roller assembly on the door or frame for pull-side applications.



9560IQ-3077
Regular Arm (REGARM)

- Handed
- A regular length, double lever, non-hold open arm for push-side applications.



9560IQ-3077L
Long Arm (LONG)

- Handed
- An extended arm for deep reveals or other special configurations on push-side applications.



9560IQ-3077TLS
Telescoping Arm (TLS)

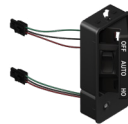
- A regular length, double lever, non-hold open arm for push-side applications with a fully adjustable linkage assembly (no hacksaw required).



9560IQ-3077LNGTLS
Telescoping Arm Long
(LNGTLS)

- An extended arm for deep reveals or other special configurations on push-side applications with a fully adjustable linkage assembly (no hacksaw required).

End Cap



9550IQ-3179
Rocker Switch Assembly

- This is an exterior Off/HO/Auto three-way rocker switch on the end cap of the metal cover. The switch is concealed from view, and is accessed by pulling the switch open from the end cap.



9550IQ-163-1
End Cap Cover Insert

- This cover insert is used to fill the end cap(s) that do not contain the Rocker Switch Assembly Insert.

Ordering Information

How to Order a 9560IQ Series Operator		
1	Choose operator	9563IQ
2	Motor gearboxes	Two standard
3	Controllers	Two standard
4	Metal cover	COV2 - Double door
5	Specify door opening width (jamb to jamb)	65" - 98"
6	Select arm	STDTRACKARM2 - Two standard arms - double pull REG2 - Two regular arms - double push LONG2 - Two long arms - double push TLS2 - Two telescoping arms - double push LNGLTS2 - Two telescoping long arms - double push REG/STD - Regular + standard arm - double egress TLS/STD - Telescoping + standard arm - double egress
7	Track	LESS - No track STD - Single standard track STD2 - Two standard tracks
8	Specify handing	RH - Right hand LH - Left hand Non-handed (double push/double pull)
9	Voltage	115V (standard selection) 230V
10	Spindle center	2.75 (standard selection) SPEC
11	Select finish	628 - Aluminum, clear anodized 710 - Dark bronze, anodized 711 - Matte black, anodized
12	Rocker switch assembly	SW - Yes NS - No

Operator will be shipped with:

- Motor gearbox mounting brackets (2)
- Controller box mounting hooks (4)
- Machine screws
- Baseplate (manufactured at specified door width)
- Cover end cap kit (one left, one right, cover insert(s), fasteners)

Measuring Door Opening Width

