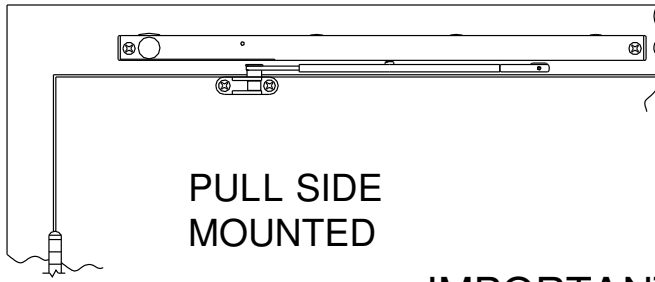
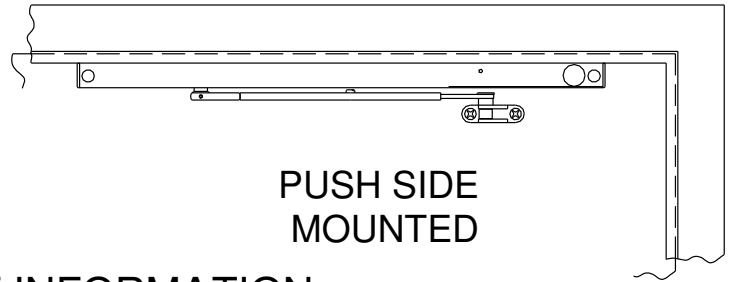


ELECTRONIC DOOR HOLDER INSTRUCTION SHEET



PULL SIDE
MOUNTED



PUSH SIDE
MOUNTED

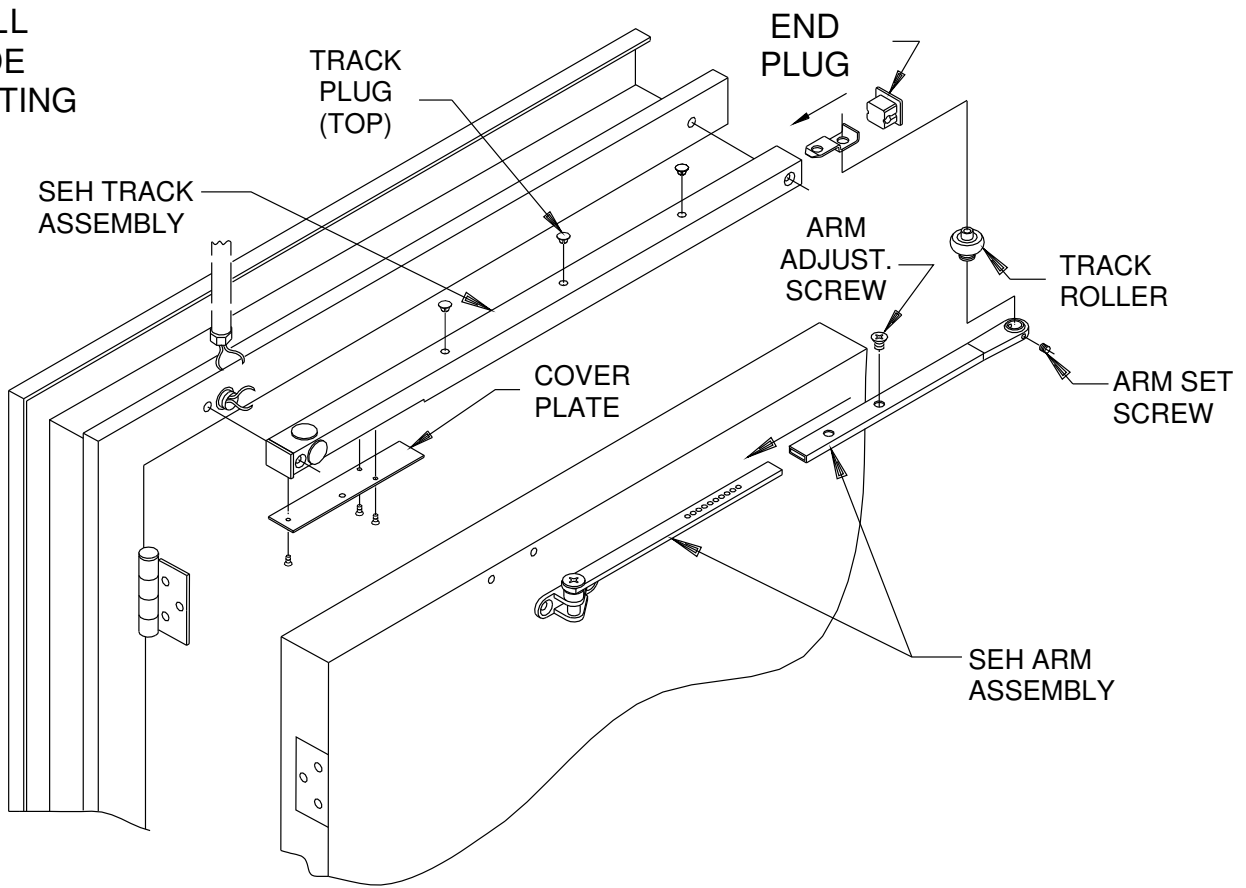
IMPORTANT INFORMATION

1. The LCN Sentronic SEH® is a door holder, hinge face mounted, that must be installed in conjunction with a opposite side mounted, UL listed door closer.
2. The hold - open feature is adjustable in 3° increments from 80° to 100°. Floor or wall stops should be used.
3. This instruction sheet and template apply to doors hung on butt hinges. Consult the factory if pivots or swing-clear hinges are to be used.

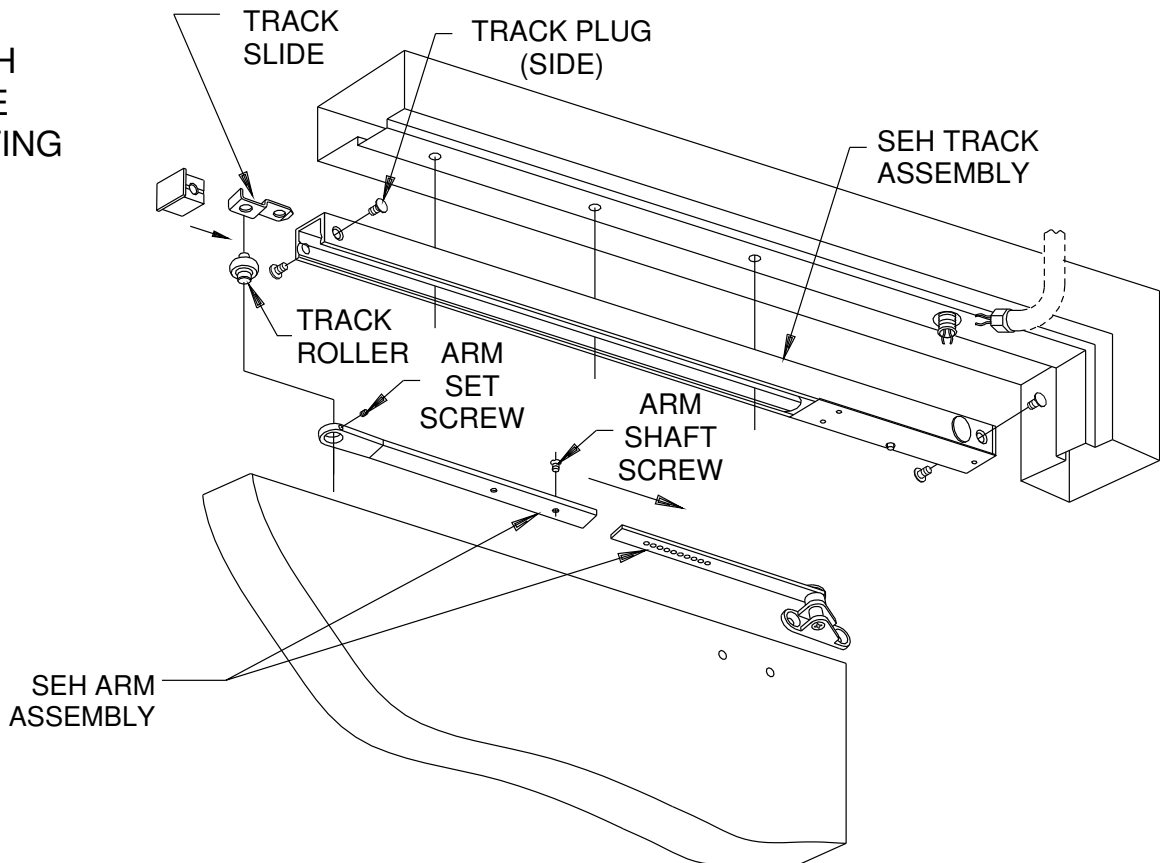
INSTALLATION INSTRUCTIONS:

1. The voltage shown on the track cover plate must match voltage supplied to door frame (24V or 120V). If concealed wiring is desired, prepare the frame to the specifications per template on page 3. If surface wiring, mount track to frame before running EMT / conduit. For 24V wiring, see enclosed Conduit Quick Connect Instruction Sheet.
2. Remove end cap from track. Insert track slide and track roller, making sure that the stud is inserted into the hole in the track slide. Re-insert end cap into track. Insert track plugs into track. Using fasteners provided, mount track on frame to the dimensions of the template on page 3.
3. Remove cover plate and make all necessary electrical connections. Replace cover plate making sure Test/Release Button is through the hole.
4. Using fastener provided, mount rod & shoe part of arm assembly to door per template on page 3.
5. Loosen set screw in the end of tube part of arm assembly and connect to track roller. Tighten the set screw firmly. With track roller at latch edge of the track, open door part way and insert rod into arm tube.
6. Slide the roller to the hinge edge of track, into hold-open position. Open door to desired degree of hold-open and insert arm adjusting screw, tightening firmly.
7. Turn power on and perform electrical checkout as follows:
 - (1.) - With power on, open door completely. Door should remain in open position. If door does not stay open, check electrical input.
 - (2.) - Push release test switch. Door should close immediately. Open the door to hold-open position and let it remain there.
 - (3.) - System should be checked at frequent intervals. It is suggested that step 2 be repeated every 90 days.

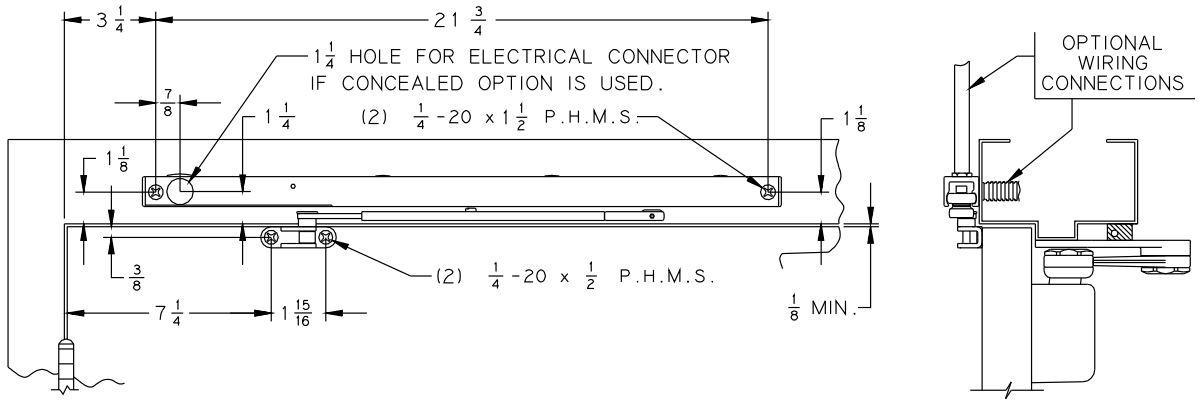
**PULL
SIDE
MOUNTING**



**PUSH
SIDE
MOUNTING**



PULL SIDE

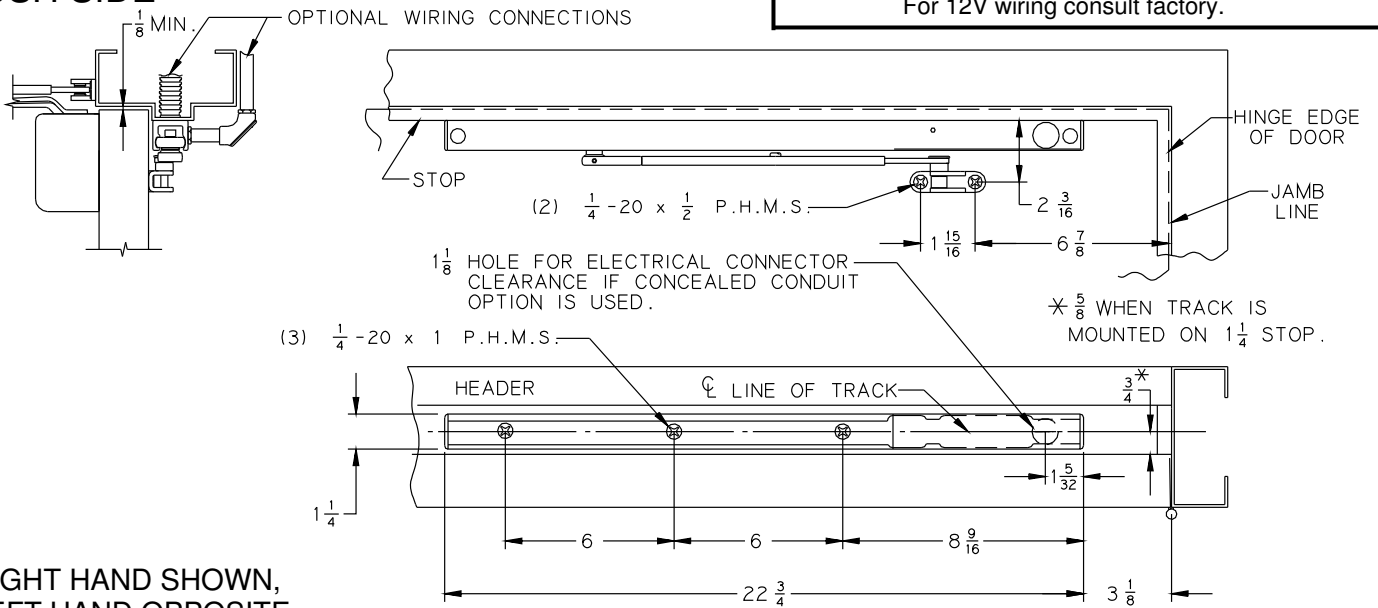


RIGHT HAND SHOWN, LEFT HAND OPPOSITE

DOOR HOLDER SOLENOID DATA

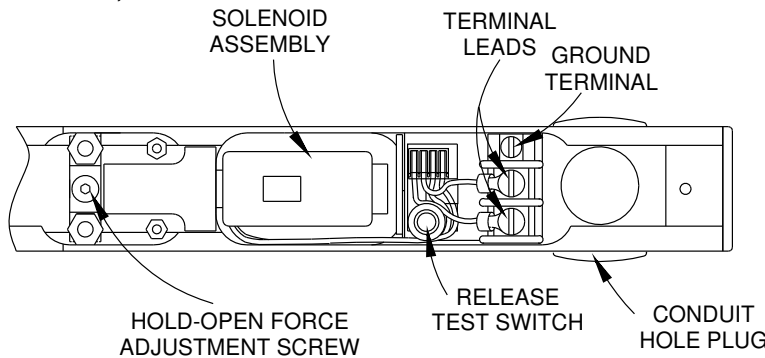
24 VAC - DC Nominal+10% - 15% @ .090 Amp. Max.
 120 VAC - DC Nominal+10% - 15% @ .030 Amp. Max.
 For 12V wiring consult factory.

PUSH SIDE



RIGHT HAND SHOWN, LEFT HAND OPPOSITE

HOLD OPEN FORCE ADJUSTMENT: Locate hold-open adjustment screw in diagram above. For greater hold open force, insert 3/32 Allen wrench (included in screwpack) and turn clockwise. To decrease amount of hold open force, turn screw counter-clockwise. Maximum of 4 turns.



! WARNING

HAZARDOUS VOLTAGE
CAN SHOCK AND
CAUSE SEVERE INJURY

Disconnect power before
making any electrical
connections or performing
maintenance.

WIRING DIAGRAM - POLARITY NOT IMPORTANT

INPUT VOLTAGE:
 24V AC/DC OR 120V SC/DC
 (usually from alarm panel or detector)
 FOR 12V AC/DC wiring
 consult factory

