



740009

# Pull Arm Assembly



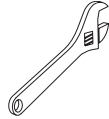
Models: 9530, 9550, 9560

Installation Instructions

## Tools Required



Phillips Screwdriver



Adjustable Wrench



1/4" Hex Key

## Items Included in Screw Bag for Arm and Track Attachment

Items	Quantity
Washer for Arm Attachment	1
1/4-28 x 0.43 Hex Cap Screw for Arm Attachment	1
14 x 2-1/2 PH Wood screw	2
1/4-20 x 1-3/4 PH Machine Screw	2
Through bolt	2
Track End Cap	2

## 1 Door Prep Hole - Drill and Tap Method or Through bolt attachment method

Drill and Tap Method	Through bolt attachment method
Surface mounted metal doors: #7 or 13/64" Drill Bit and 1/4-20 Tap required	3/8" Drill Bit required
Wood Doors: 1/8" Drill Bit Required	

## 2 Pull Arm Door Installation

2a Install the header according to the template.

① **NOTE: Check header for plumb before proceeding with arm and track installation. The pull arm must be attached according to the following instructions.**

2b Turn the power to the operator on. Twist the yellow and gray activation wires together. The spindle will begin to slowly rotate to the full open position. The spindle should rotate half a revolution, (180°) stop, and remain in that position.

2c Place the door in the closed position. The door must remain closed during the arm installation.

2d Install the spindle adapter into the arm as shown in template on Page 3.

2e Install the arm onto the spindle at the full open position, (90° perpendicular to the door) and tighten the allen head pinch bolt.

2f Prep the door for the track as shown in instructions.

2g Slide the track onto the roller of the arm.

2h Disconnect the yellow and gray activation wires. In a few seconds the arm will swing back to meet the door.

① **NOTE: Take care to keep track parallel to door as the arms swings back. CAUTION: Watch for pinch points, keeping fingers clear as the arm and track swing to the closed door position for mounting**

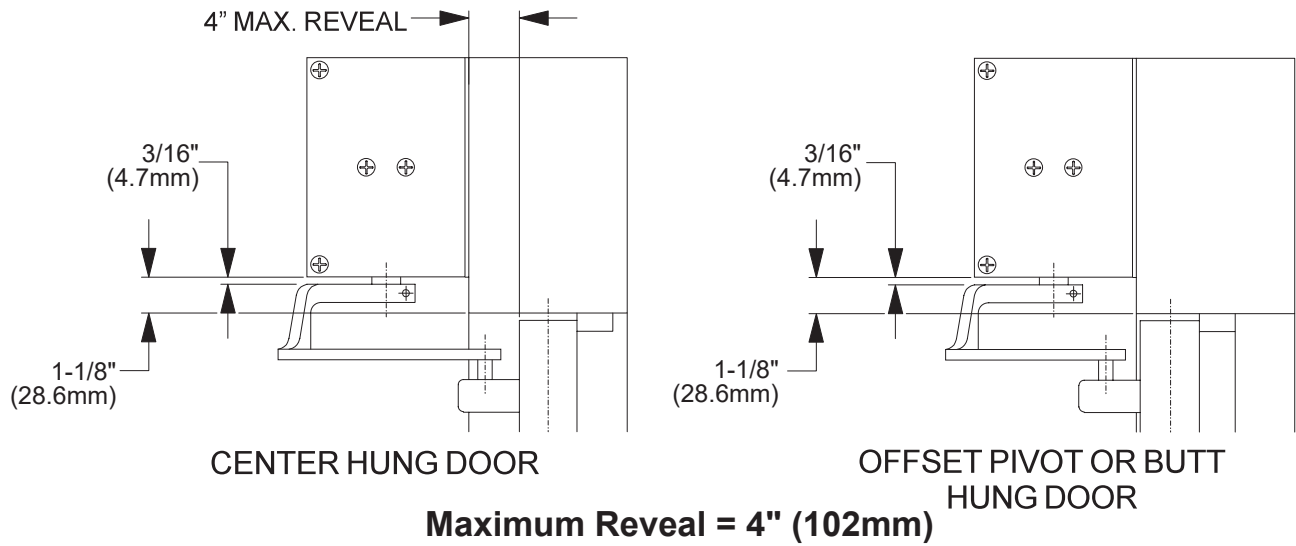
2i Line up the track up with the pre-drilled holes and fasten it to the door.

2j Tap yellow and gray activation wires together, to activate a door cycle.

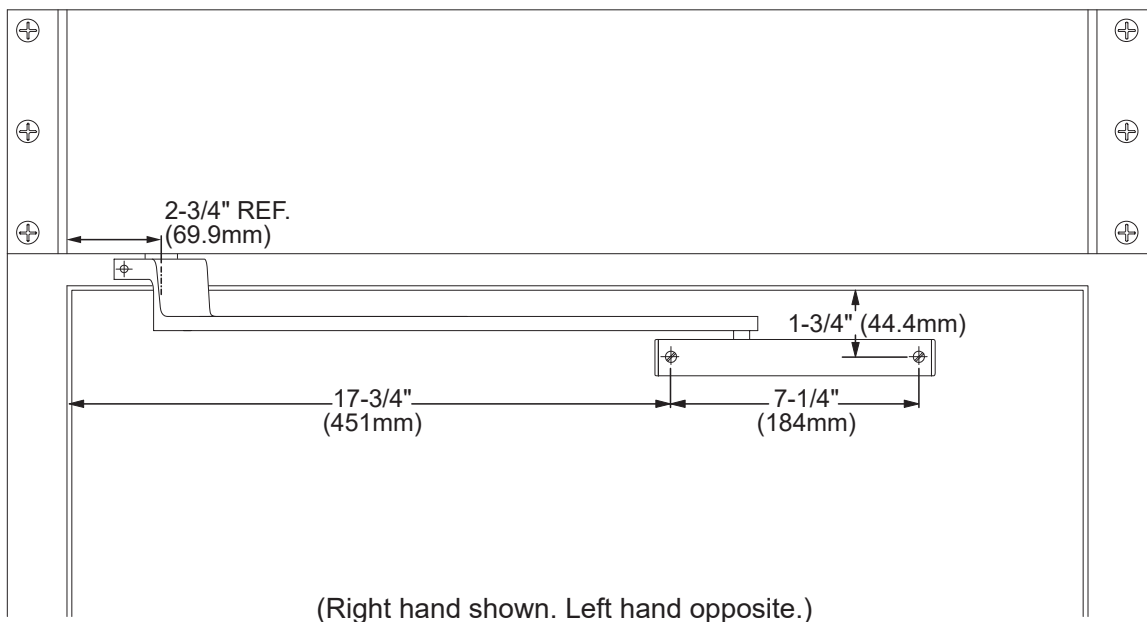
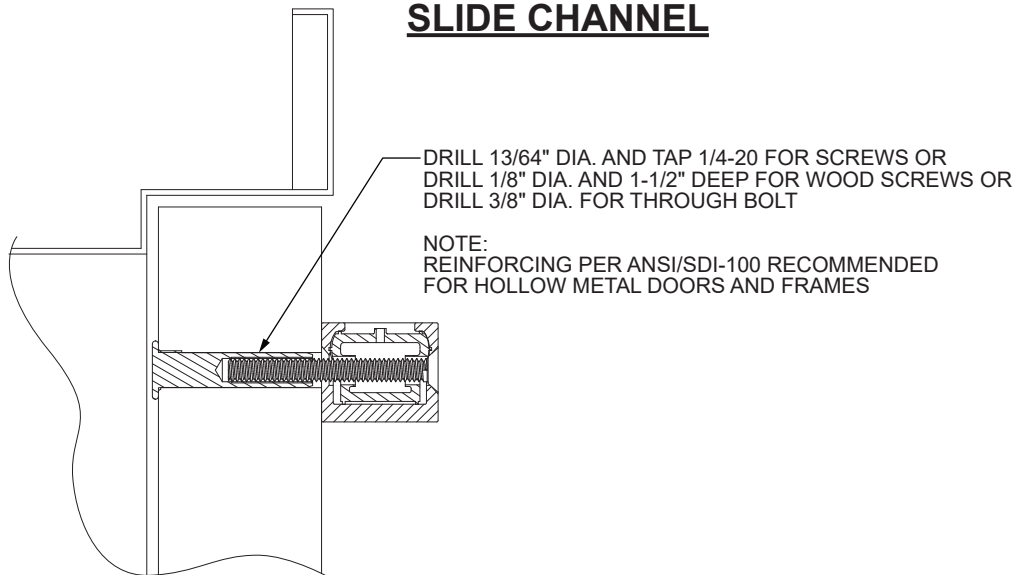
2k The door should open and close as expected. (First activation may run a slow learn cycle)

2l If no further adjustments are needed, secure the arm by installing the hex cap screw and washer.

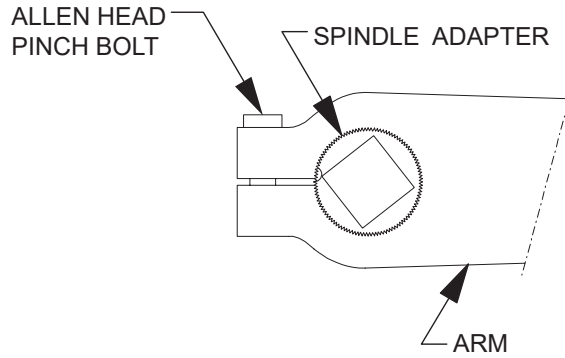
## HEADER



## SLIDE CHANNEL



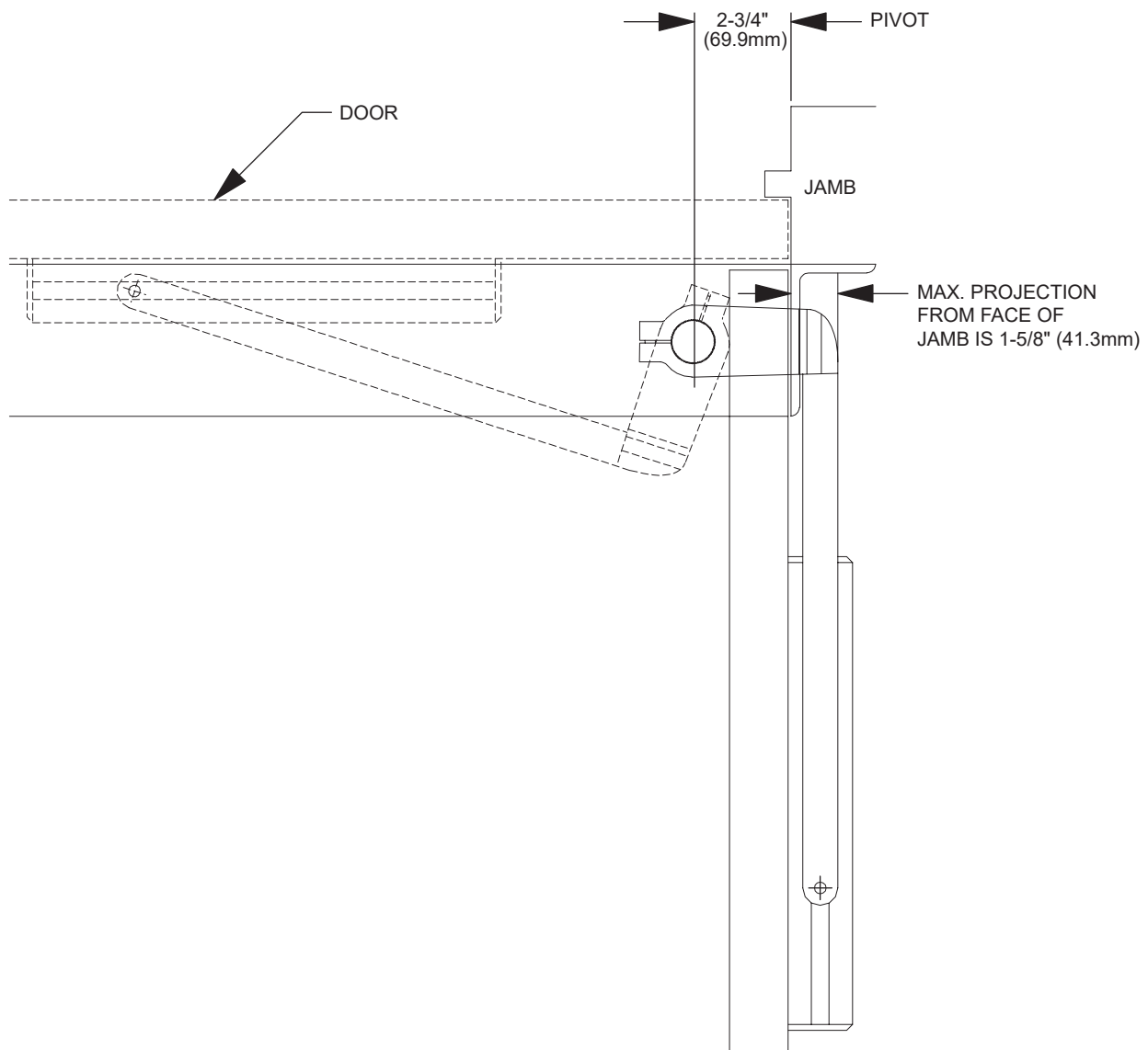
## SPINDLE ADAPTER



### NOTES:

1. Slot in adapter is factory installed two notches off center line as shown. This works for all standard applications.
2. Slots should never be misaligned more than five notches either way.

## MAXIMUM ARM PROJECTION



**Customer Service**  
1-877-671-7011 [www.allegion.com/us](http://www.allegion.com/us)



© Allegion 2020  
Printed in U.S.A.  
740009 Rev. 03/20-c