



71376

1450 Series

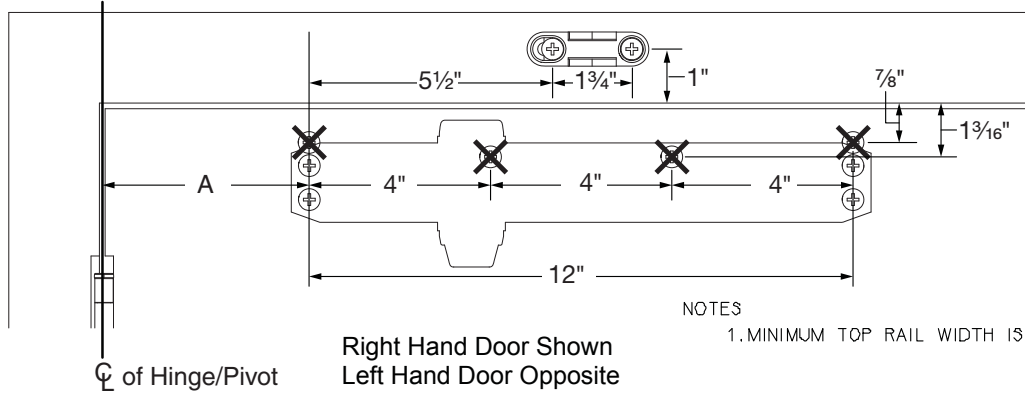


Drop Plate

Installation Instructions

1450 PULL SIDE (DOOR MOUNT) DROP PLATES

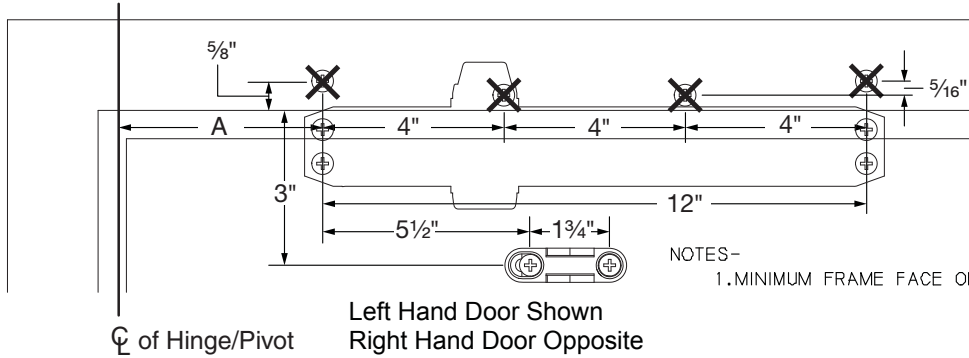
Pull side Arm Mounted On:
1450-18 Drop Plate
1450-18FC Drop Plate



Opening	Dimension A
To 100°	7 1/2"
100° -130°	6"
Over 130°	4 1/2"

1450 PUSH SIDE (TOP JAMB) DROP PLATES 1450-18 Drop Plate

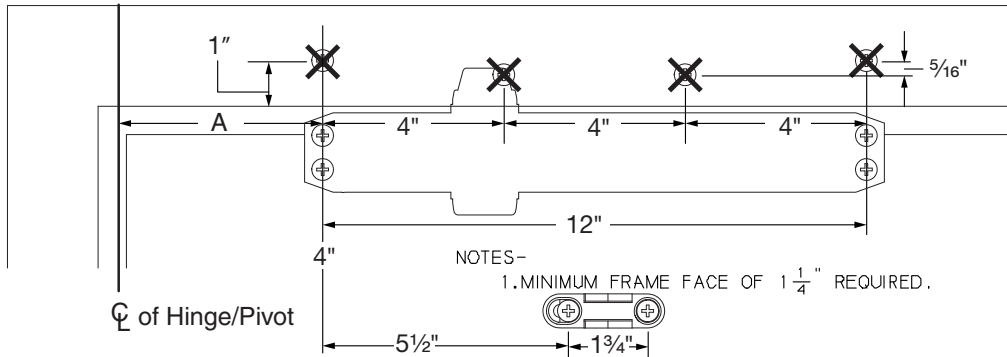
Push Side Arm Mounted On:
1450-18 Drop Plate



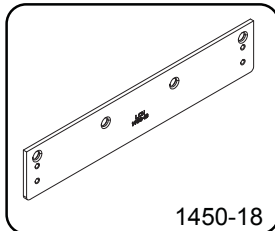
Opening	Dimension A
To 100°	7 1/2"
100° -130°	6"
Over 130°	4 1/2"

1450-18PA Drop Plate

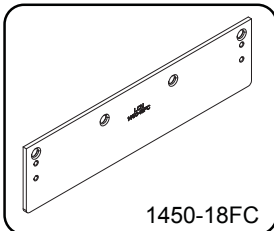
Push Side Arm Mounted On:
1450-18PA Drop Plate



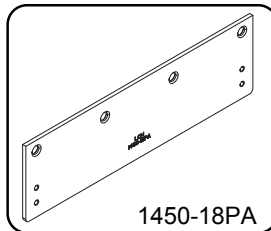
Opening	Dimension A
To 100°	7 1/2"
100° -130°	6"
Over 130°	4 1/2"



1450-18



1450-18FC



1450-18PA

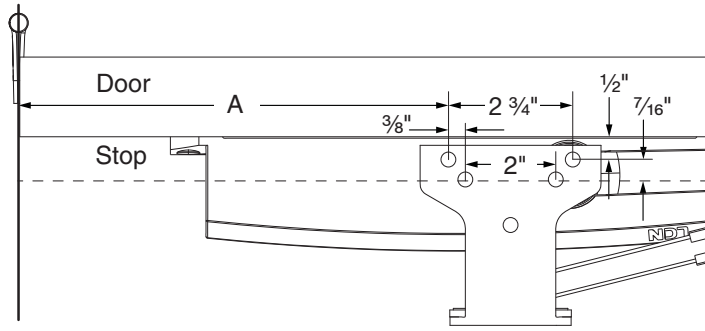
INCH	7/16	1/2	1	1 1/4	1 1/2	1 15/16	2 3/8	2 3/4	4
M. M.	11	13	25	32	38	49	60	70	102
INCH	4 1/8	5 1/2	7	7 3/4	7 7/8	8 1/4	11 1/4	11 5/8	12 3/4
M. M.	105	140	178	197	200	210	286	295	324

General Notes:

1. On Top Jamb & Hinge Face Mounts. Locate Closer & Shoe From Q of Pivot or Swing Clear Hinge Pin When Used.
2. On Top Jamb Mounting When Overhead Stop is Used, Shoe Must Be Lowered To Clear Holder.
3. For 180° Opening On Hinge Face Mounts, Max Buttsize Is 5" X 5"
4. Reinforcing Per ANSI/SDI-100 Recommended For Hollow Metal Doors and Frames.

1450 Push Side (Door Mount) Drop Plates

Push Side Parellel Arm Mounted On: 1450-18PA Drop Plate 1450-18PAFC Drop Plate

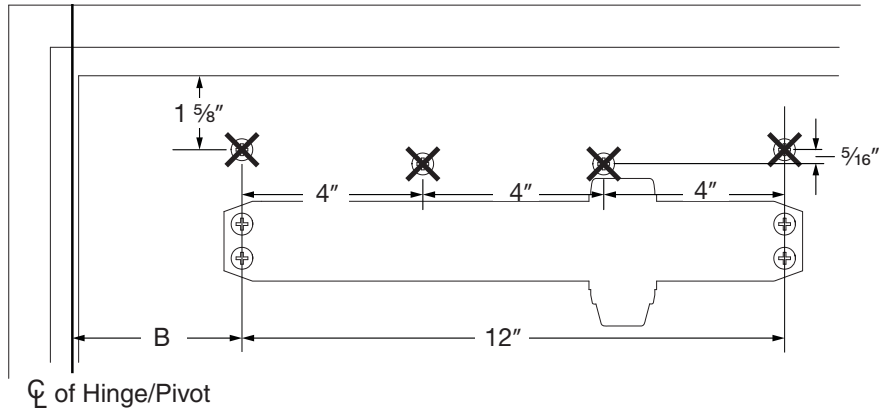
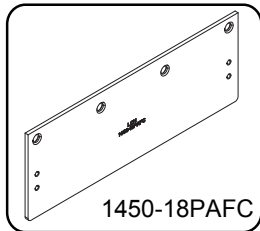
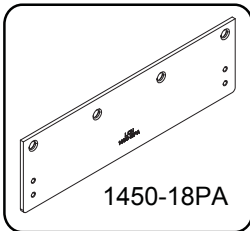


Opening	Dimension A	Dimension B
To 100°	9 1/2"	3 3/4"
Over 130°	7"	1 1/4"

☉ of Hinge/Pivot

Left Hand Door Shown
Right Hand Door Opposite

NOTES-
1. MINIMUM TOP RAIL WIDTH IS 1 7/8"



☉ of Hinge/Pivot

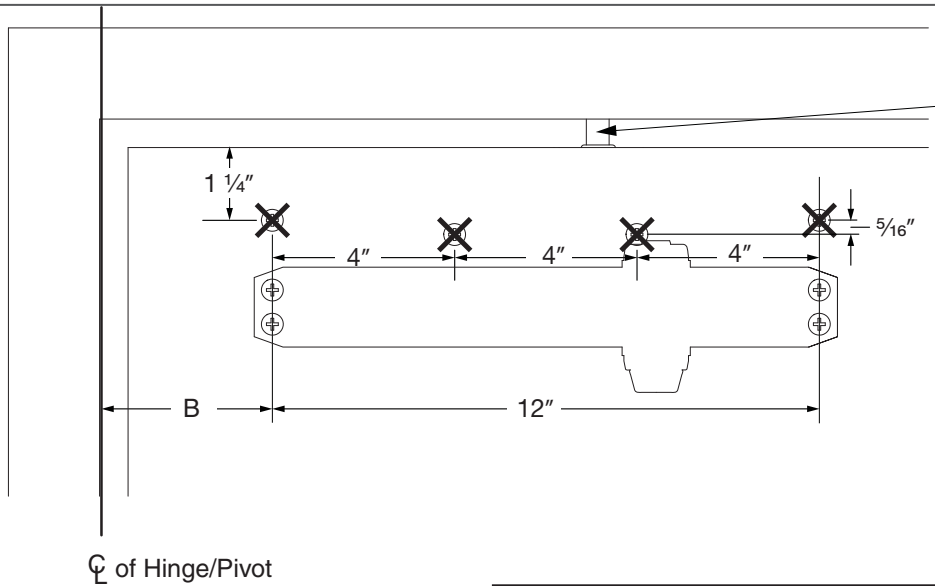
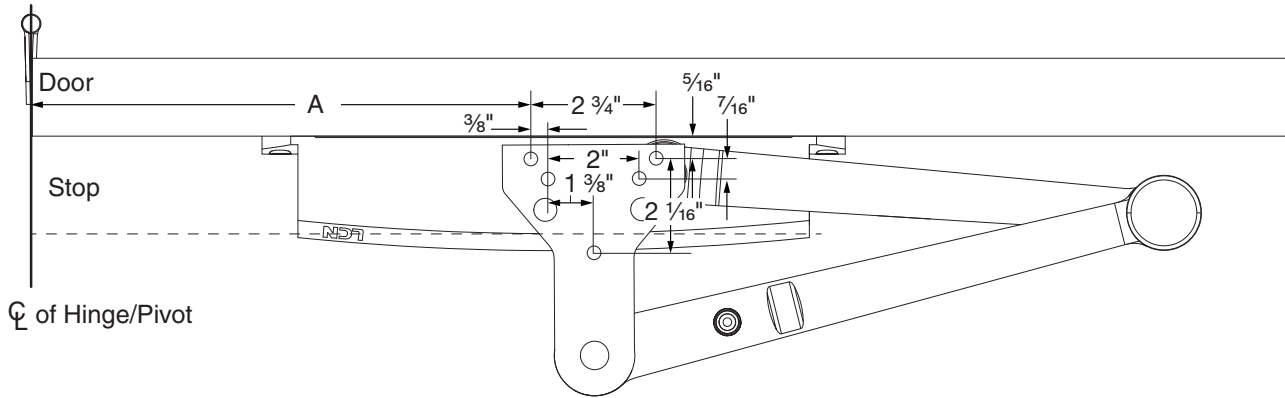
INCH	5/16	1/2	11/16	7/8	1 1/16	1 11/16	1 3/4	2 3/8	2 3/4
M.M.	8	13	17	22	27	43	44	60	70
INCH	3 1/2	5 1/4	5 1/2	8 3/4	11 1/2	12 3/4			
M.M.	89	133	140	222	292	324			

General Notes:

1. On Top Jamb & Hinge Face mounts. Locate closer & shoe from ☉ of pivot or swing clear hinge pin when used.
2. On Top Jamb mounting when overhead stop is used, shoe must be lowered to clear holder.
3. Reinforcing Per ANSI/SDI-100 recommended for hollow metal doors and frames.

**1450 Cush
Drop Plates**

**Push Side, Parellelarm Mounted On:
1450-18PA Drop Plate
1450-18PAFC Drop Plate**



IMPORTANT

Use spacer block provided for Fifth screw 1/2" or 5/8"

Notes:

1. Minimum Top Rail Width is 1 1/2"

General Notes:

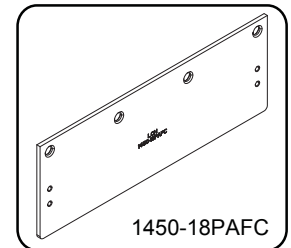
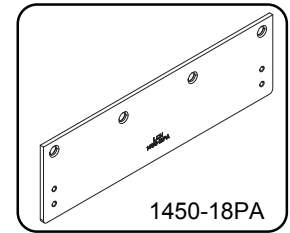
1. If door is hung on pivots
Locate closer and shoe from
C of pivot point.
2. Top rail less than 4 3/4
Requires drop plate.
3. All dimensions applicable
For hold open or dead stop.
4. Delayed action optional.
5. Reinforcing per. ANSI/SDI-100
Recommended for hollow
Metal door and frames.
6. 5/8 maximum allowable side
Stop.
7. Using fasters provided
Mount drop plate with
(4) 1/4 - 14 x 1 3/8 S.R.T.
Mount closer to drop plates
(4) 1/4 - 20 x 1/2 P.H.M.S.
* Increase this dimension to
15/16 for spring cush FC

Opening	Dimension A	Dimension B
85°	11"	5 1/2"
90°	10 1/4"	4 3/4"
95°	9 1/2"	4"
100°	8 7/8"	3 3/8"
105°	8 1/4"	2 3/4"
110°	7 5/8"	2 1/8"

INCH	1/4	5/16	3/8	1/2	5/8	11/16	7/8	1	1 1/16	1 1/2	1 5/8
M. M.	6	8	10	13	16	18	22	25	27	38	41

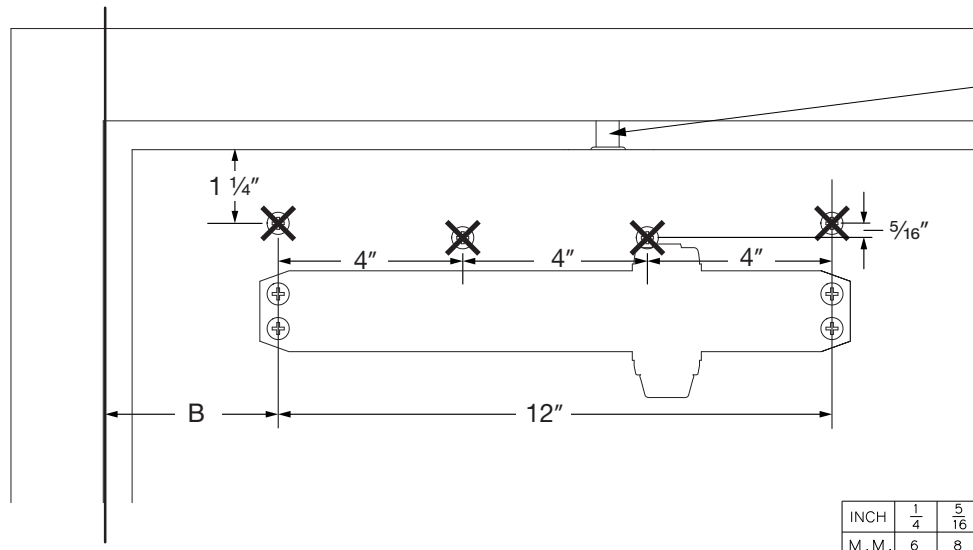
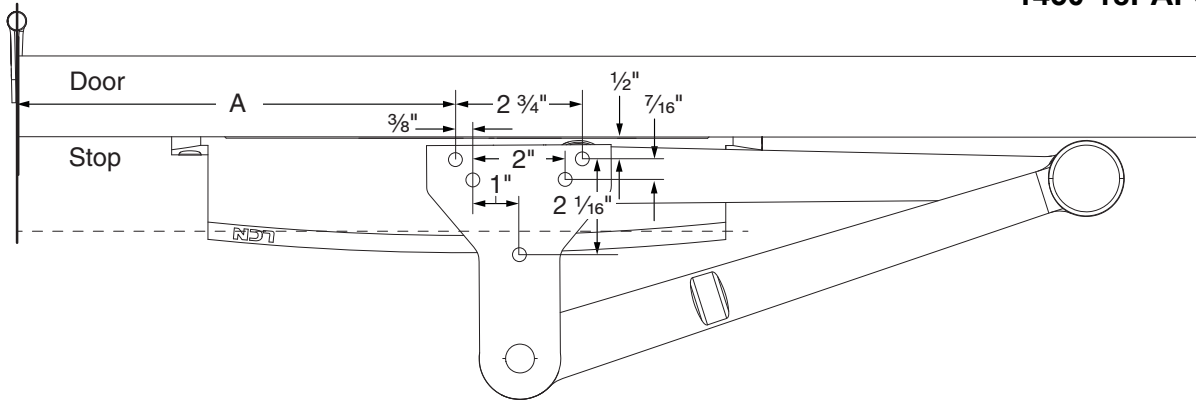
INCH	1 1/16	2	2 3/8	2 5/8	2 3/4	2 7/8	3 3/16	3 3/8	4 3/4	4 7/8	5 1/2
M. M.	43	51	60	66	70	73	81	86	120	123	139

INCH	5 7/8	6 5/8	7 1/2	10 1/16	11 1/16	11 9/16	12 1/4
M. M.	149	168	190	255	281	293	311



**1450 EDA
Drop Plates**

**Push Side, Parellel Arm Mounted On:
1450-18PA Drop Plate
1450-18PAFC Drop Plate**

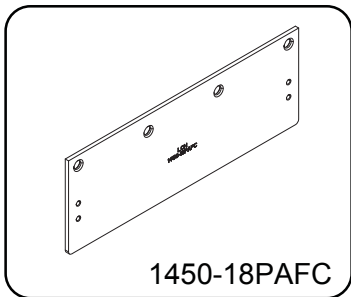
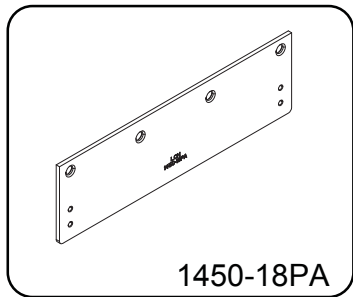


IMPORTANT
Use spacer block provided for Fifth screw 1/2" or 5/8"

☉ of Hinge/Pivot

Left Hand Door Shown
Right Hand Door Opposite

INCH	1/4	5/16	3/8	1/2	5/8	11/16	7/8	1	1 1/16	1 1/2	1 5/8
M. M.	6	8	10	13	16	18	22	25	27	38	41
INCH	1 1/16	2	2 3/8	2 5/8	2 3/4	2 7/8	3 3/16	3 3/8	4 3/4	4 7/8	5 1/2
M. M.	43	51	60	66	70	73	81	86	120	123	139
INCH	5 7/8	6 5/8	7 1/2	10 1/16	11 1/16	11 9/16	12 1/4				
M. M.	149	168	190	255	281	293	311				



Opening	Dimension A	Dimension B
To 100°	9 1/2"	3 3/4"
Over 120°*	7"	1 1/4"

* Door openings to 180° conditions permitting

General Notes:

1. If door is hung on pivots locate closer and shoe from ☉ of pivot point. (consult factory if using swing clear hinges.)
2. Closer size 12 1/4 x 2 3/4 x 2 3/8.
3. Top rail less than 4 3/4 requires drop plate.
4. All dimensions applicable for hold open.
5. Delayed action optional.
6. Reinforcing per ANSI/SDI-100 recommended for hollow metal door and frames.
7. 5/8 maximum allowable side stop.
8. Using fasters provided mount drop plate with (4) 1/4 - 14 x 1 3/8 S.R.T. mount closer to drop plates with (4) 1/4 - 20 x 1/2 p.H.M.S. Max. Butt hinge size 5 x 5.

Customer Service

1-877-671-7011 www.allegion.com/us



© Allegion 2015
Printed in U.S.A.
71376 Rev. 01/16-b